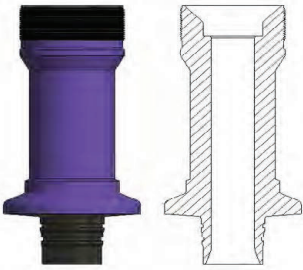


LEE POSI LOCK

DESCRIPTION

With the Lee Posi-Lock you can operate safely and efficiently when moving tool strings from well to well. This remotely operated wellhead connection uses a large entry guide to allow for simple execution of placing the stinger (which connects directly to the end of the lubricator string), directly into the body of the lock where it is secured in place by a hydraulically driven clamp, similar in design to an API 16A clamp (Sub-sea).



DESIGN ADVANTAGES

- Large steel entry guide: Better impact resistance.
- Compact overall height: At 42.5" the risk of damage during mobilization and deployment is greatly reduced.
- Optional built-in pump-in ports eliminates the flow-tee in the stack, effectively reducing overall stack height.
- Built-in quick test ports: The quick test port confirms well connection.
- Lock Position Indicators: 2 x manual and 1 x electronic indicators of lock position status.
- Lock out w/ well pressure: The clamp cannot be opened with pressure on the Lee Posi-lock/wellhead.
- Lee Posi-Lock Nightcap Extractor: The telescoping night cap extractor arm provides a simple and effective way to insert or remove the nightcap from the Lee Posi-Lock.
- Lee Posi-Lock Stinger : The stinger connects to the pin union at the bottom of the PCE stack and allows for insertion into the funnel of the lock where it is clamped and contains a built-in wireline re-entry guide from 6.5" to 5.125".

The control unit is available in a 3 or 4 lock, configurations and can be configured as an air driven version if required.

Digital module that displays and records lock status as well as the well bore and quick test pressure.

Built-in 20 gallon accumulator

Hand pump for quick test sub operation

