

Chemical Injection Sub

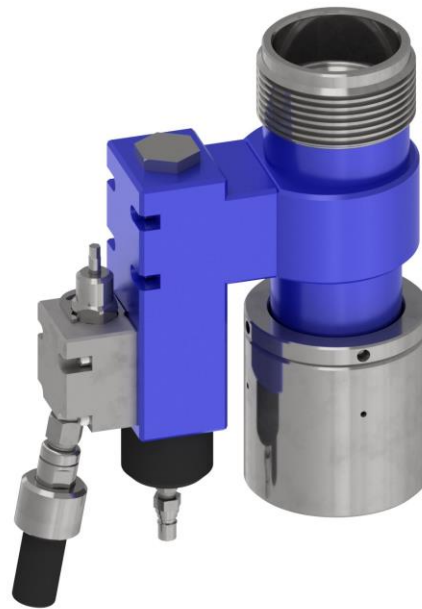
Specifications & Dimensions

Specifications:

- **Working Pressure:** Up to 15,000 psi
- **Service:** H2S (NACE MR0175) & Standard
- **Temp Rating:** -40°F to 250°F (-40°C to 121°C)
- **Cable Head Size:** 3/4" to 1-7/8"
- **Hose Length:** Please specify when ordering
- **Union Type:** Please specify when ordering

Accessories:

- Test plug
- Lubricator wrench
- Hydraulic hand pump & hose
- Seal kit
- High pressure hose



A Chemical Injection Sub performs two tasks: It allows for injection of fluids such as de-icing agent or corrosion inhibitor into the well, and it allows for purging of air pressure from a pressure control stack.