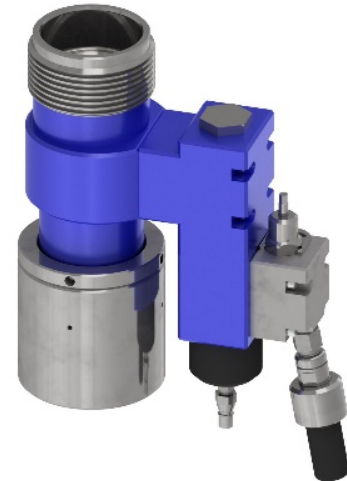


Assembly Part Number: AM682UU0041

Description: Chemical Injection Sub 10k 3" Type O

Working Conditions		
Maximum Working Pressure		10,000 psi
Test Pressure		15,000 psi
Operating Temperature Range		-40°F / 250°F (-40°C / 121°C)
Elastomer Temperature Range		-40°F / 320°F (-40°C / 160°C)
Primary Service/Other Service		H2S/CO2
Design Specification		
Top Connection (Box)	Thread Size	5.75"
	TPI	4
	Seal Diameter	4.00"
Bottom Connection (Pin & Collar)	Thread Size	5.75"
	TPI	4
	Seal Diameter	4.00"
Injection Port Type		Lee Quick Coupler
Injection Port Size		1.75" -5(0.875")
Elastomer Type		HNBR
Material		4130/4140
Dimensions		
Internal Diameter		3.06"
Overall Width		6.9"
Overall Length		18"
Made-Up Length		13"
Weight		140 lbs. (64 kg)
Design Criteria		
API 6A (Latest Edition)		Yes
NACE MR 0175 (Latest Edition)		Yes
Accessories		
Union C-Wrench		PM652UU1515-070A
Seal Kit		AM682RK0041



Additional Information: Phosphate Coated